

FINANCE, AMG/ACC

10000/100/ EMM
(FILE #6)

10000/100/ EMM
(FILE #6)

ORGANIZATIONAL HISTORY
MAR. 1944

308

(2)

Brigade

Coe Stewart.

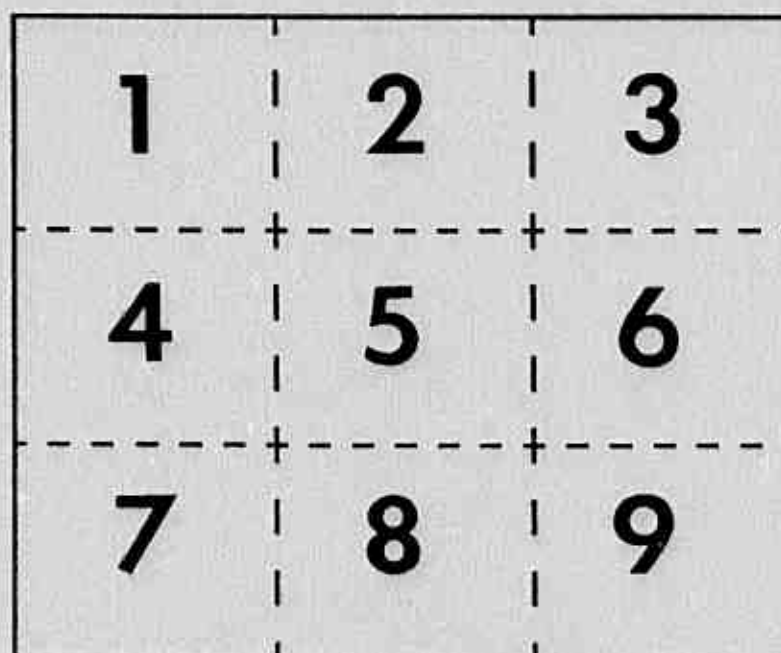
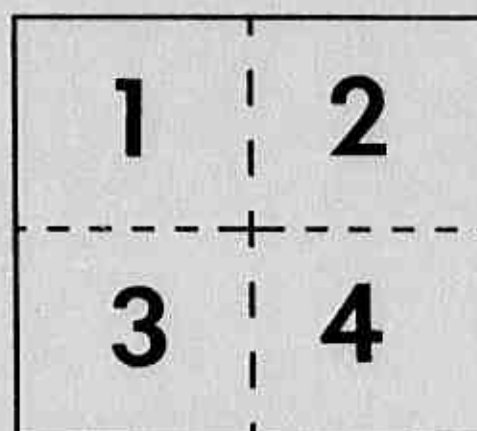
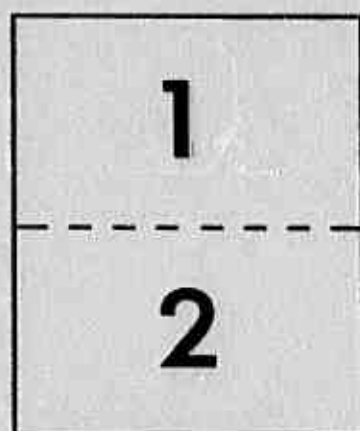
Herewith three
copies of a general
chart: the A.F.A.
genealogical tree and
a memo on its functions
will be ready to-morrow.

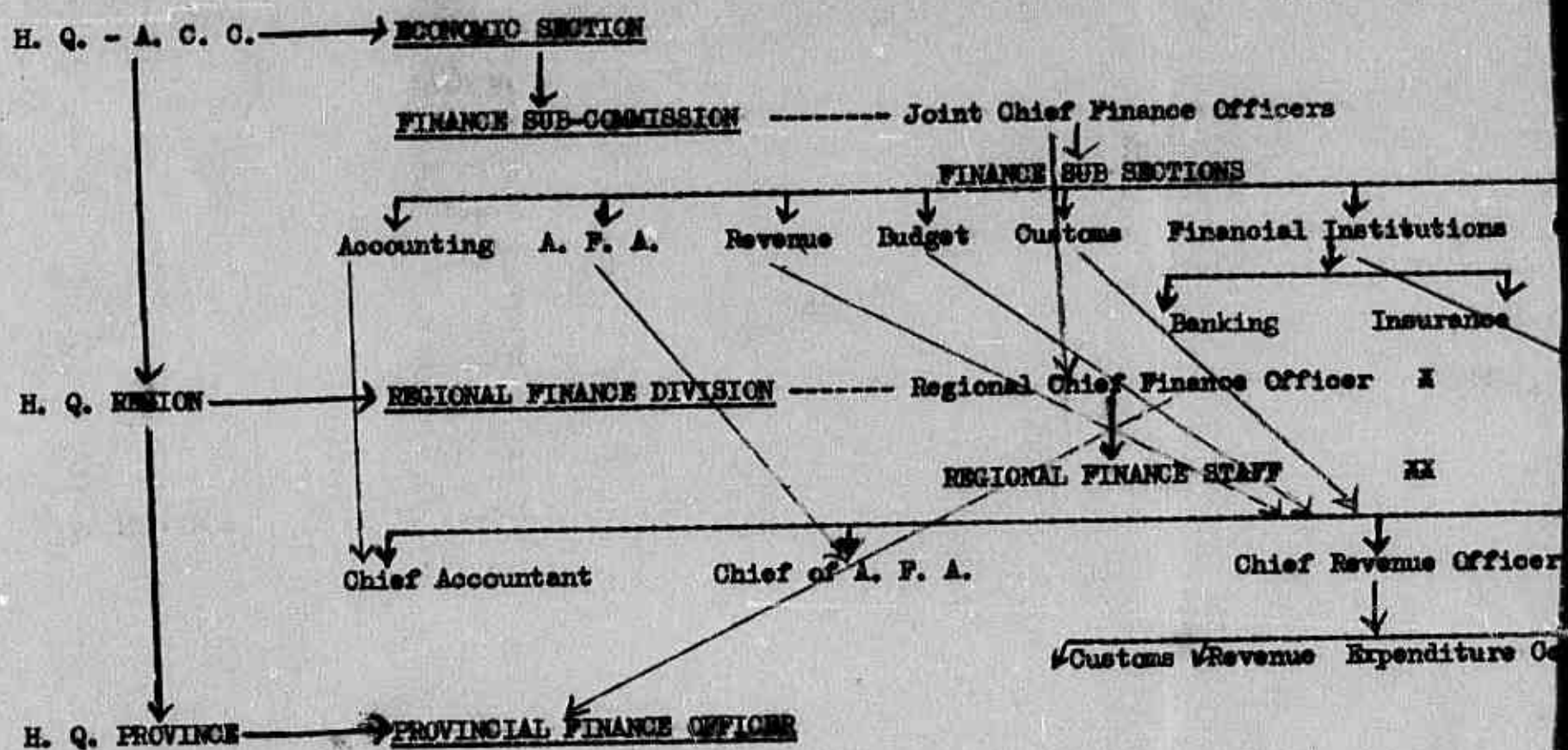
ASB.

22/3

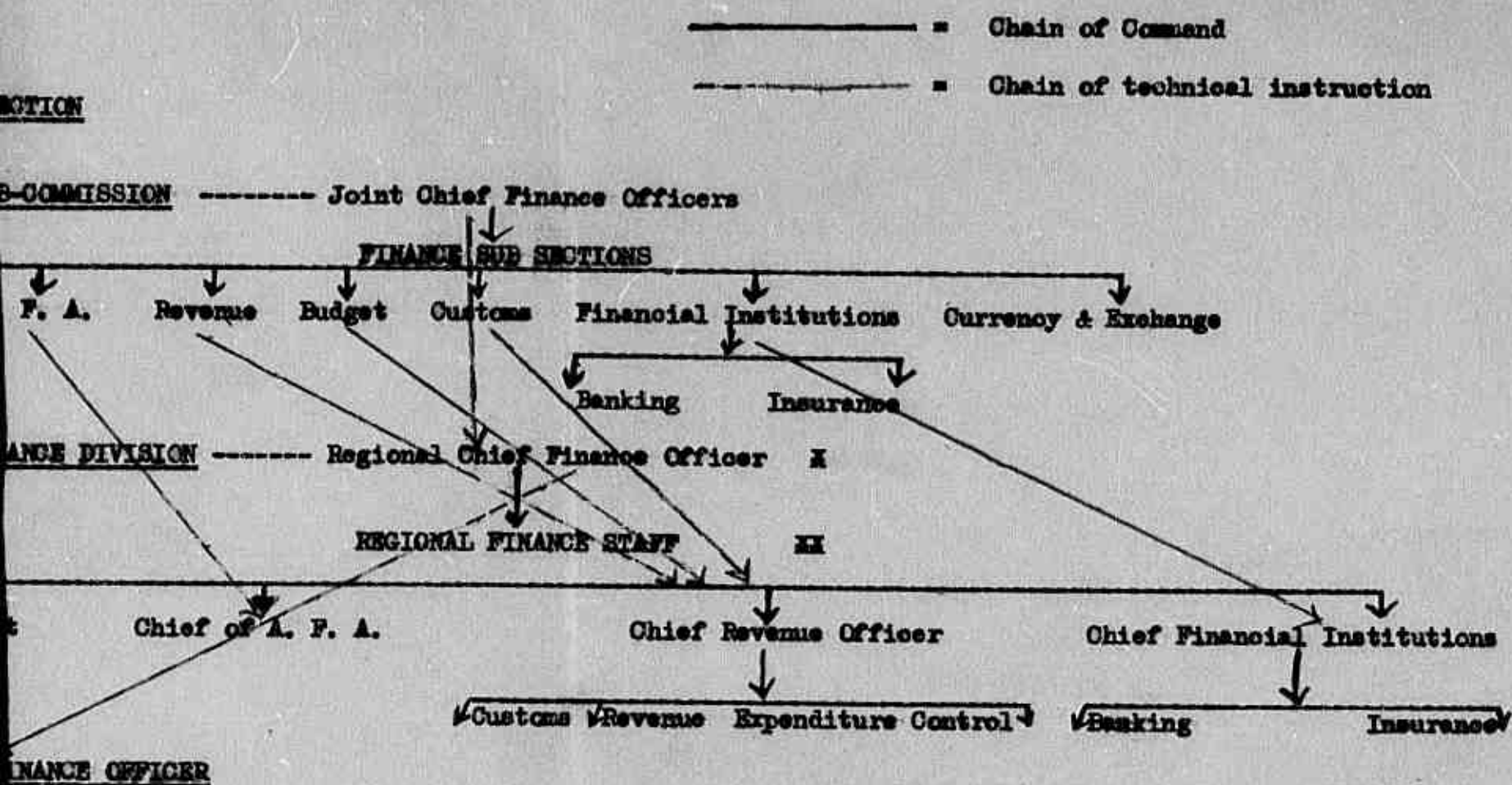
MAPS AND CHARTS TOO LARGE TO FILM
ON ONE EXPOSURE ARE FILMED CLOCKWISE
BEGINNING IN THE UPPER LEFT CORNER,
LEFT TO RIGHT, AND TOP TO BOTTOM.

SEE DIAGRAMS BELOW.





X One of the undermentioned officers will be designated Deputy C. F. O.
 XX These appointments may not always be in the person of a separate officer according to the size of the Region and strength of available personnel



The undermentioned officers will be designated Deputy C. F. O.
 appointments may not always be in the person of a separate officer -
 to the size of the Region and strength of available personnel.

- X One of the undermentioned officers will be designated Deputy C. F. O.
- XX These appointments may not always be in the person of a separate officer - according to the size of the Region and strength of available personnel.

Chain of Command.

Provincial Finance Officers are under command of Provincial Commissioners but receive instructions on technical matters from the Chief Finance Officer at Regional H.Q. Nevertheless access remains open to them, in accordance with normal military procedure, to make representations through the channel of their immediate Commanding Officer (Provincial Commissioner) to the Regional Commissioner, should the instructions received be difficult of fulfillment or appear to them inadvisable in the light of local conditions.

The same applies in regard to Regional officers vis-a-vis their subsectional opposite in the Finance Sub-Commission.

It should be noted that Chief of A. F. A. at Region is in a somewhat different situation to the rest of the Regional Finance Staff, as he is held on the strength of the Sub-Commission and attached at Region. Thus he is subordinated to the Regional Commissioner and C.F.O. for administrative and disciplinary matters but answers direct to A.F.A. H.Q. in regard to

SEVS.

21 March 1944.

One of the undermentioned officers will be designated Deputy C. F. O. These appointments may not always be in the person of a separate officer - according to the size of the Region and strength of available personnel.

nd.

al Finance Officers are under command of Provincial Commissioners but receive their technical matters from the Chief Finance Officer at Regional H.Q. Nevertheless open to them, in accordance with normal military procedure, to make representation on behalf of their immediate Commanding Officer (Provincial Commissioner) to the Commissioner, should the instructions received be difficult of fulfillment or appear to be in the light of local conditions.

applies in regard to Regional officers vis-a-vis their subsectional opposites Sub-Commission.

It should be noted that Chief of A. F. A. at Region is in a somewhat different situation from the Regional Finance Staff, as he is held on the strength of the Sub-Commission at Region. Thus he is subordinated to the Regional Commissioner and C.F.O. for administrative and disciplinary matters but answers direct to A.F.A. H.Q. in regard to policy.

0081